

Partners proposal



Explore MAP Growout Systems

From Planning through Branding

PREPARED FOR:
Aquaculture Industry



MAP is an Aquaculture company founded by veteran large-scale operators, which includes a network of multidisciplinary experts and trusted partner entities to provide you with a MAP to successfully Navigate to your objectives in Aquaculture along the entire value stream.

We are recognized for our practical innovative approach, honest analysis, and our wide vision that provides projects with leading technology and operational excellence.

WHY WE ARE HERE?

The Challenges

I: Our world's growing population and seafood consumption.

II: Many heavy Industrial activities hamper the carrying capacity and seafood productivity of the natural waters.

III: Aquaculture exceedingly relies on natural resources which defeats its essence.

IV: Short-sited investment and Lack of knowledge and experience.

V: Frequent endeavor partial or complete failures and low success rate.

VI: Lack or over Confidence of Aqua investors.

Our Approach

I: Productivity - Produce More with Less!

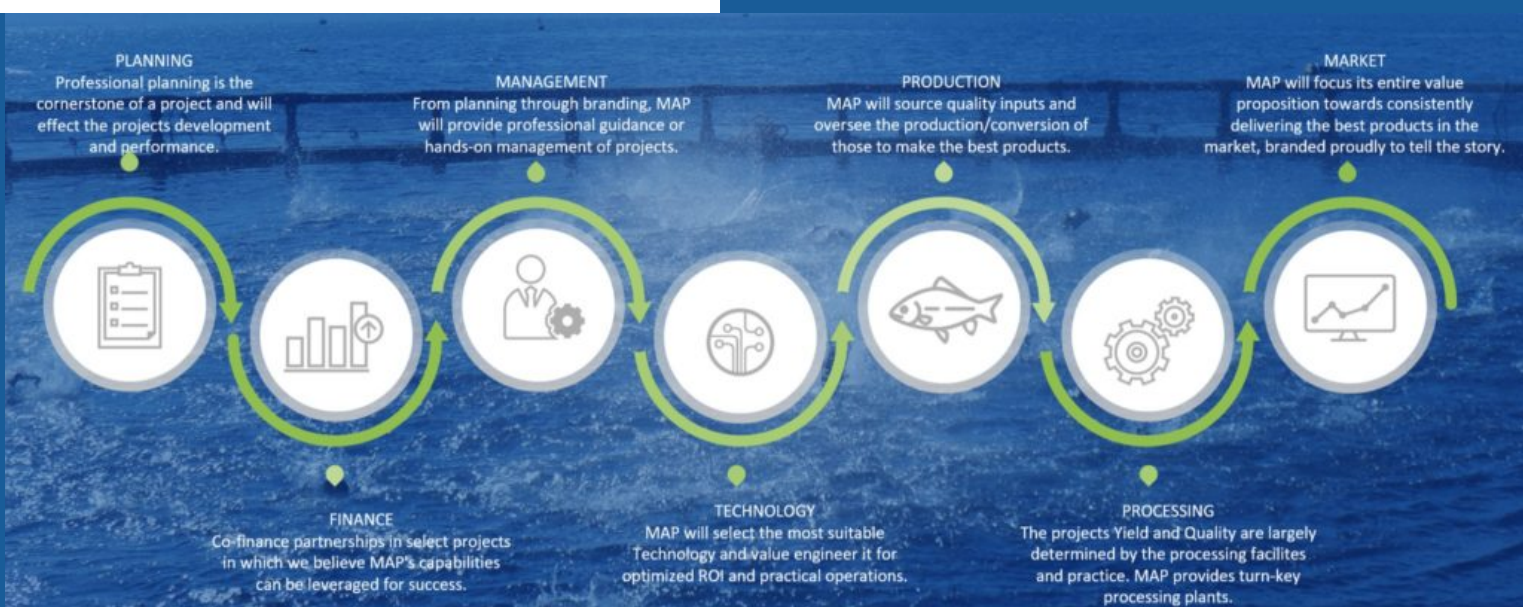
II: Enhance natural ecosystems with fish!

III: Vertical Integration Projects (VIP's) to close all loops and recycle all INPUTS!

IV: Navigate investors and operations and integrate the wisest solutions holistically. "Planning through Branding!"

V: Partner with endeavors based on success and not selling a certain product!

VI: MAP the value stream and maintain the balance between Potential and Reality!



We are on your Team!



Yedod Snir
Founder, CEO &
Lead RAS Designer



Israel Snir
President & Founder



Mario Ramirez
CTO & Co-Founder



Larissa Dias
Marketing & Sales



Allan Reyes
Cages Specialist



Yaron Shaool
Administration



Denis Josué Mancía
Hatchery &
Production Expert



Novian Nur Andresena
Architectural Design



Luis Enrique Ornelas
Civil Engineering



Mario Gonzalez
Mechanical Engineering



The four **E**'s:

Our Experience proves that when organizations Ethically invest in their people and Environmental stewardship, they create cohesiveness and unity towards a common goal and gain long-term Economic success and sustainability.

THE ESSENCE OF AQUACULTURE

VISION

Aquaculture industry's success to grow healthy seafood to reduce our impact on the Land and Oceans is crucial for our future!

MISSION

MAP will support Aqua endeavors to achieve and exceed they're Productive, Economical, and Social goals, with minimal dependence on natural resources to promote the industry's Sustainable Growth.

MAP Growout Systems

What we offer?

MAP has many years of **Hands on Operations Experience** to design large-scale and modern Growout systems which are Groundbreaking in terms of Technology, competitiveness and Return on Investment.

- All culture systems
- Any location
- All commercial Species
- Design and Engineering
- Integration of leading Technologies
- Professional Guidance enhancement
- Feasibility studies
- Design & Engineering
- Genetics planning
- Production planning
- Nutrition
- Fish health
- Marketing support



Recirculation Aquaculture Systems

RAS provides significant advantages to produce local fresh products within a land-based ecosystem. RAS technology allows year-round production in a fully isolated and controlled setting with minimal environmental interaction.

We have been involved from the early inception of RAS and at the forefront of its development since. We have a portfolio of potential RAS equipment solution providers to incorporate into our design, MAP's unique RAS concept provides projects with leading technology and operational excellence.



Pond Systems

MAP has the expertise to design large-scale and modern pond systems which are competitive in productivity and cost of production.

Pond Aquaculture can be an ecologically sound way to grow fish, however, requires a lot of land, water, energy, and labour. MAP has proven experience to design, build, and operate large-scale and cost-effective pond projects where conditions merit.

We can offer varying levels of intensification of culture and technical solutions to optimize existing Pond Aquaculture both in Mono and Polyculture. Pond water is an excellent source for enhanced crop irrigation and therefore lends itself to Fish Before Irrigation (FBI) schemes.



Cage Systems

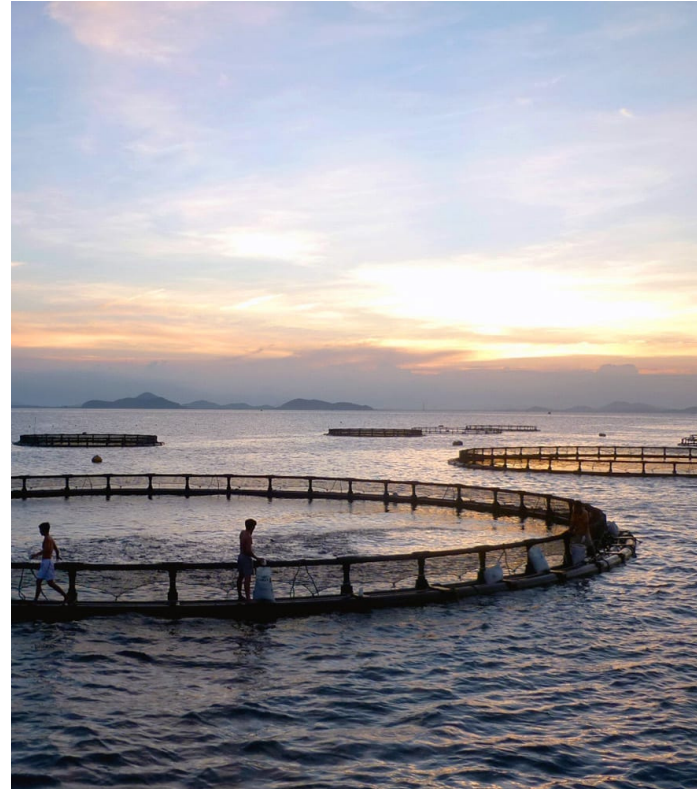
Our experience in effective large scale cage farming across different environments allows us to provide customized solutions for efficient & safe production.

We believe cage farming can continue to be the significant driver of Aquaculture growth in the coming years when managed sustainably.



Marine Cages Systems

MAP works with partner companies to supply thoroughly engineered offshore cage systems including mooring grids, submersible cages, and work equipment. Our operational experience allows us to confirm the quality and durability of all components deployed.



Freshwater Cages Systems

MAP has designed, built, and managed some of the largest cage projects globally and can provide expertise and technologies for freshwater environments including shore-based logistics support systems.

Pros of MAP's Growout Systems

Innovative technology to overcome challenges and continuously enhance productivity and efficiency.



Commercially proven designs for warm and Cold fresh and salt water species

All MAP systems interface for a seamless bio-secure production process



Reduced water and energy usage is always a top design priority

MAP designs from operational point of view and experience reducing the need for professional labor



Temp-controlled systems for year-round production in temperate zones

Segmented life support systems and All in All out production for biosecurity.



Built in Redundancy at every stage of the process

Mechanized fish transfer and Automated monitoring systems



What you can count on?

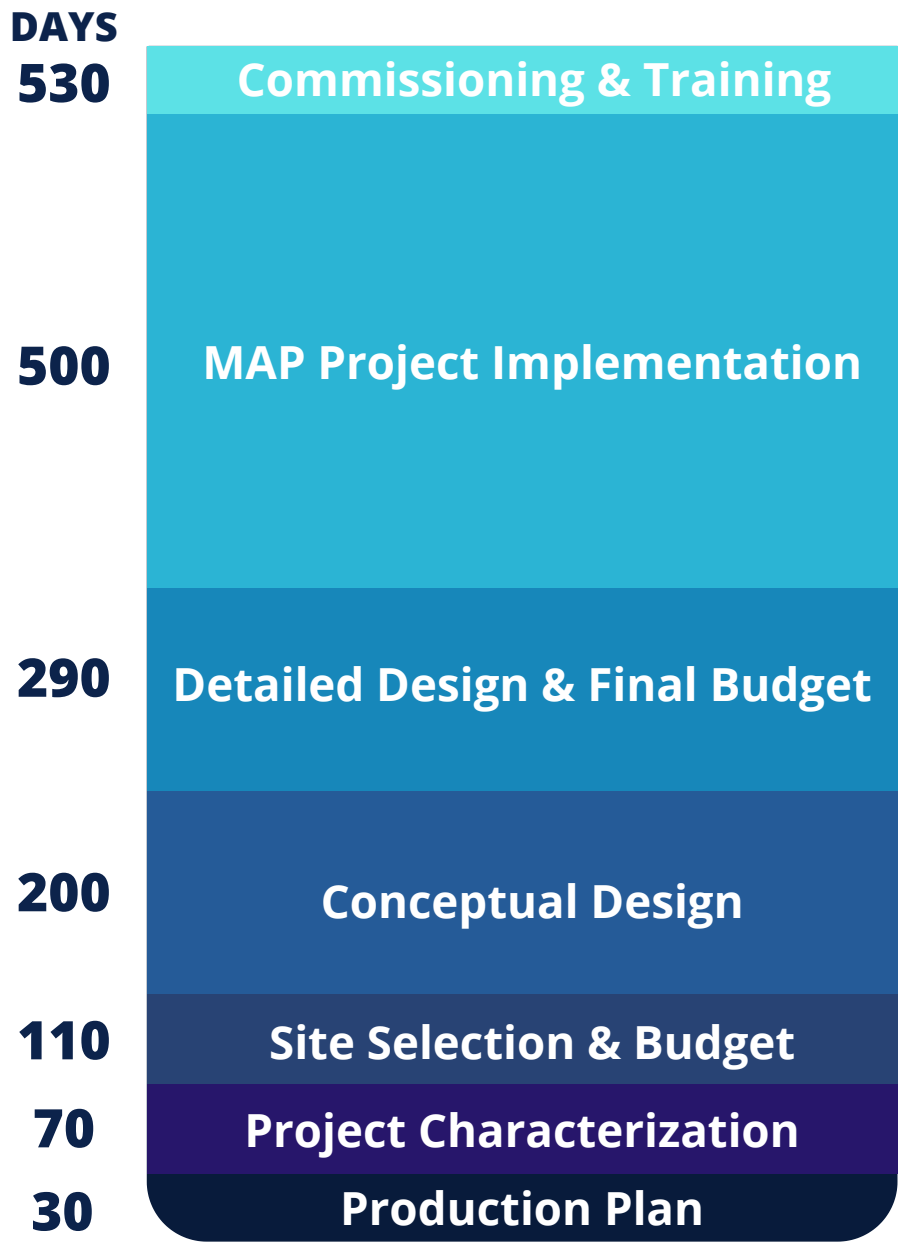


- ✓ Lower mortality
- ✓ Improved disease immunity
- ✓ Better Growout performance
- ✓ Zero therapeutants
- ✓ Less water and Energy usage
- ✓ Less labor
- ✓ Lower conversion rates (FCR)
- ✓ Lower CAPEX and OPEX
- ✓ Smaller footprint
- ✓ Year-round production
- ✓ Disease resilience
- ✓ Genetics selection program



Expected Timeline

From Planning to Production, you will have your complete and customized system in only 1.5 years



Shortening the learning curve!

Aquaculture is complicated and the challenges are constant!

Careful attention to a seemingly infinite amount of details across a wide range of factors is a MUST.

Maintaining the consistency and engagement of the management and operating teams is a MUST.

MAP to navigate will make the difference your business needs to succeed.

- ✓ **A dedicated team of experts 24/7.**
- ✓ **Boots on the ground and in the water.**
- ✓ **Multidisciplinary approach.**
- ✓ **Ever growing knowledge base.**
- ✓ **Decades of experience to prevent pitfalls.**
- ✓ **Success based profit agreements.**
- ✓ **Co-investment agreements.**
- ✓ **Always represent the project and investor.**





Tartaria

Wilica

Calama

Cosim

Grustina

Marmo

rea

Arme

Natolia

So

Egyptus

Nubia

Abiissi

Arabia

Zibit

Fartach

Vella

Zulia

Magadaco

ni

Vasco de Aenna

di Mal

dunar

Goa

Nariga

Talecut

Zerlan

Gisla

Navigate with us on your Aqua Journey towards Success!

Why partner with us?

- MAP is founded and owned by veteran large scale Aqua operators.
- Our mission is to help more Aqua projects succeed and to tailor our solutions to their REAL needs.
- We are not married to any specific technology and always will pursue the best interest of our partners.
- We work with a broad network of industry experts who we know and trust to support your project.
- At MAP we work diligently and tirelessly until the set goals for the project are met or exceeded.
- MAP can stay engaged in Production well beyond the design, integration and commissioning.



THANK YOU!

We look forward to working with you.



www.mapaqua.com

info@mapaqua.com

+1 (413) 768-9300

