

Partners proposal



**Explore MAP
RAS Hatchery**

From Planning through Branding

PREPARED FOR:
Aquaculture Industry



MAP is an Aquaculture company founded by veteran large-scale operators, which includes a network of multidisciplinary experts and trusted partner entities to provide you with a MAP to successfully Navigate to your objectives in Aquaculture along the entire value stream.

We are recognized for our practical innovative approach, honest analysis, and our wide vision that provides projects with leading technology and operational excellence.

WHY WE ARE HERE?

The Challenges

I: Our world's growing population and seafood consumption.

II: Many heavy Industrial activities hamper the carrying capacity and seafood productivity of the natural waters.

III: Aquaculture exceedingly relies on natural resources which defeats its essence.

IV: Short-sited investment and Lack of knowledge and experience.

V: Frequent endeavor partial or complete failures and low success rate.

VI: Lack or over Confidence of Aqua investors.

Our Approach

I: Productivity - Produce More with Less!

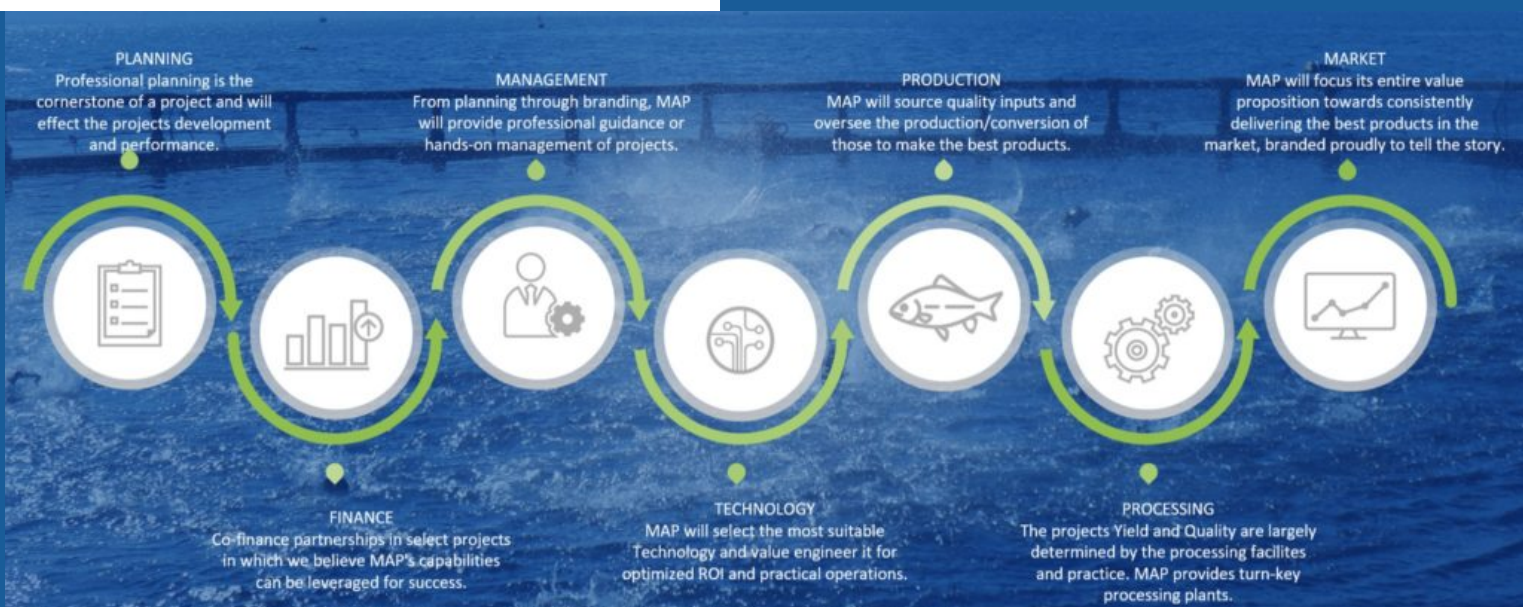
II: Enhance natural ecosystems with fish!

III: Vertical Integration Projects (VIP's) to close all loops and recycle all INPUTS!

IV: Navigate investors and operations and integrate the wisest solutions holistically. "Planning through Branding!"

V: Partner with endeavors based on success and not selling a certain product!

VI: MAP the value stream and maintain the balance between Potential and Reality!



We are on your Team!



Yedod Snir
Founder, CEO &
Lead RAS Designer



Israel Snir
President & Founder



Mario Ramirez
CTO & Co-Founder



Larissa Dias
Marketing & Sales



Allan Reyes
Cages Specialist



Yaron Shaool
Administration



Denis Josué Mancía
Hatchery &
Production Expert



Novian Nur Andresena
Architectural Design



Luis Enrique Ornelas
Civil Engineering



Mario Gonzalez
Mechanical Engineering



The four **E**'s:

Our Experience proves that when organizations Ethically invest in their people and Environmental stewardship, they create cohesiveness and unity towards a common goal and gain long-term Economic success and sustainability.

THE ESSENCE OF AQUACULTURE

VISION

Aquaculture industry's success to grow healthy seafood to reduce our impact on the Land and Oceans is crucial for our future!

MISSION

MAP will support Aqua endeavors to achieve and exceed they're Productive, Economical, and Social goals, with minimal dependence on natural resources to promote the industry's Sustainable Growth.

MAP Hatchery

MAP has the capability to design, build and supply Recirculation Aquaculture Systems (RAS) for most of the commercial species in the markets today.

What we solve for?

Disease - Vertically transmitted viral and bacterial

Genetics - Inconsistent and reliance on external sources

Weather - Inconsistent weather and seasonality of production

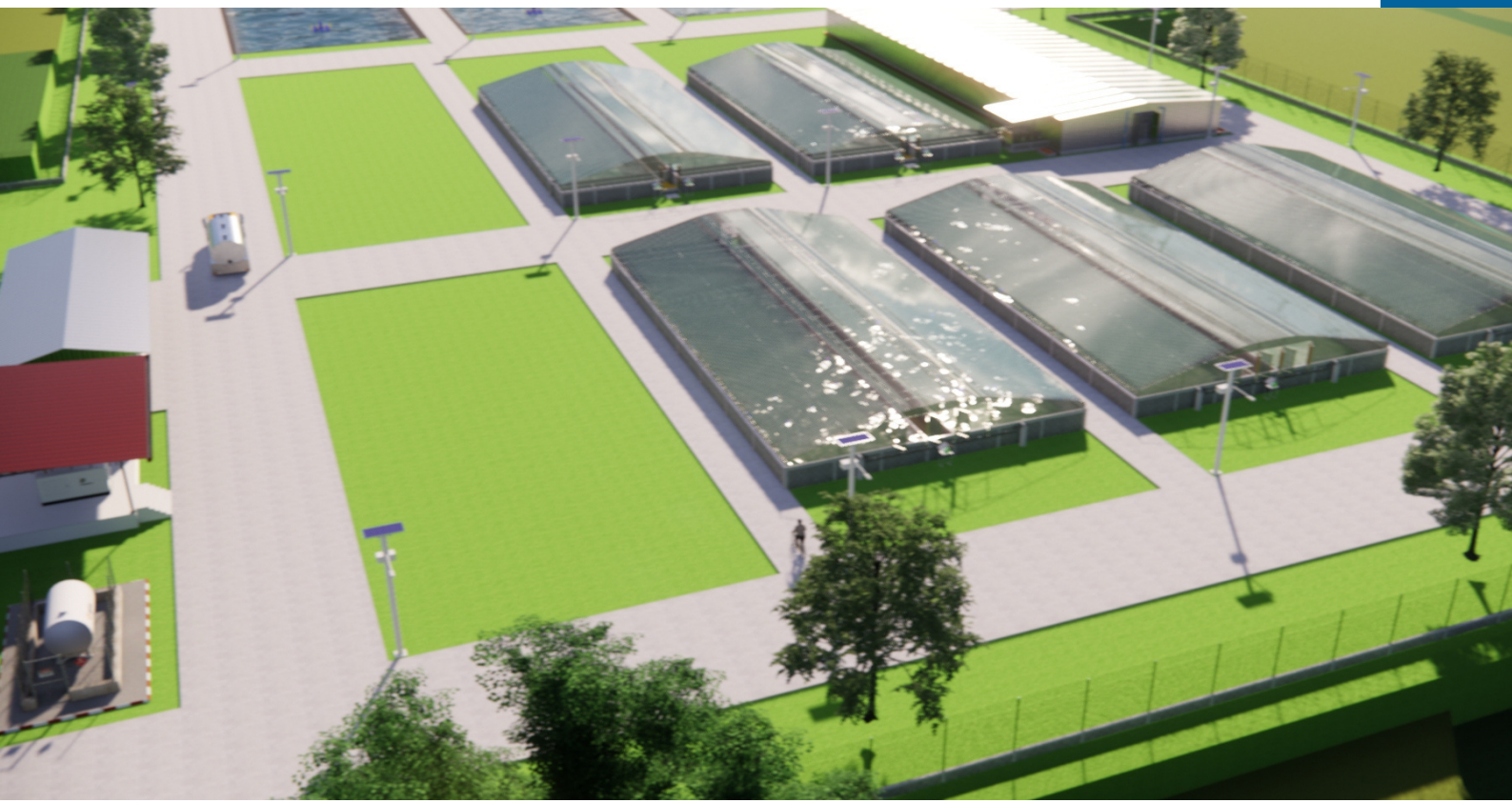
Labor - Manual operations require trained and expensive labor force

Logistics - Long distance transport of fingerlings and Juveniles losses

Natural resources - Reliance and impact on Land, water, and environment

Quality - Weakened and stressed seed's hampering Growout performance

AND OUR SOLUTION?



Challenges create opportunities!

MAP RAS Hatchery 2022 Project



In 2020 MAP founders set out to design and build the most innovative and cost-competitive RAS Hatchery out there.

Our main goal is to provide a modular system to allow a constant supply of fingerlings from controlled bio-secure conditions year-round.

Our design combines practical experience with state-of-the-art research and technology to assure the quality and consistency of the fingerling product shipped to the growers.

Features of MAP's Hatchery

Innovative technology to overcome challenges and continuously enhance productivity and efficiency.



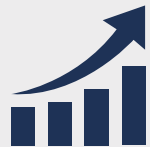
Proven System design and SOP's customizable to our partners specific site and Genetics

Compact footprint facilitating control and minimizing resources



A fraction of Water and Energy consumption vs. extensive

Modular design for incremental production, CAPEX, OPEX



Temp controlled RAS for year-round production in temperate zones

"Silo" and AIAO production method keeping cohorts separated throughout



High-capacity, practical RAS for operations flexibility and resilience

Platform ready for Mechanization and Automation upgrades



Technical Parameters

Min/max Capacity (#million/yr): 10m a 100m	Females inventory: ~10,000
Density harvest fingerling (kg/m ³): ~10.0	Water exchange (%/day): ~10%
Footprint productivity (#/m ² /yr): ~1000	Temp range (Deg C): 26-30
Stock/Harvest avg weight (gr): egg ~1.5-3.0	Expected eFCR: 0.8-1.1
Labor productivity (#/pe/yr): ~1,500,000	Investment (\$USD/#/yr): ~\$0.10
Survival rate egg to fingerling (%):~65%	Temp control: Yes
Liquid Oxygen: Only for Emergency	Automation: Yes

Our hatchery solution combines a highly controlled environment with integrated technology to produce the strongest and healthiest fish.

What you can count on:

- ✓ Lower mortality
- ✓ Improved disease immunity
- ✓ Better Growout performance
- ✓ Zero therapeutants
- ✓ Less water and Energy usage
- ✓ Less labor
- ✓ Lower conversion rates (FCR)
- ✓ Lower CAPEX and OPEX
- ✓ Smaller footprint
- ✓ Year-round production
- ✓ Disease resilience
- ✓ Genetics selection program



Expected Timeline

From Planning to Production, you will have your complete and customized hatchery in only 530 days.



A complete & customized hatchery!

Our design approach will help you reach your business targets sooner and in a more cost-effective way. We'll work closely with you to create a facility that meets your needs and improves the quality of your fingerlings.



Navigate with us on your Aqua Journey towards Success!



Why partner with us?

- MAP is founded and owned by veteran large scale Aqua operators.
- Our mission is to help more Aqua projects succeed and to tailor our solutions to their REAL needs.
- We are not married to any specific technology and always will pursue the best interest of our partners.
- We work with a broad network of industry experts who we know and trust to support your project.
- At MAP we work diligently and tirelessly until the set goals for the project are met or exceeded.
- MAP can stay engaged in Production well beyond the design, integration and commissioning.



THANK YOU!

We look forward to working with you.



www.mapaqua.com

info@mapaqua.com

+1 (413) 768-9300

