



Partners proposal



**Explore our Innovative
Processing Plant
Solutions**

From Planning through Branding

PREPARED FOR:
Aquaculture Industry

About MAP Aqua



MAP is an Aquaculture company founded by veteran large-scale operators, which includes a network of multidisciplinary experts and trusted partner entities to provide you with a MAP to successfully Navigate to your objectives in Aquaculture along the entire value stream.

We are recognized for our practical innovative approach, honest analysis, and our wide vision that provides projects with leading technology and operational excellence.

WHY WE ARE HERE?

The Challenges

I: Our world's growing population and seafood consumption.

II: Many heavy Industrial activities hamper the carrying capacity and seafood productivity of the natural waters.

III: Aquaculture exceedingly relies on natural resources which defeats its essence.

IV: Short-sited investment and Lack of knowledge and experience.

V: Frequent endeavor partial or complete failures and low success rate.

VI: Lack or over Confidence of Aqua investors.

Our Approach

I: Productivity - Produce More with Less!

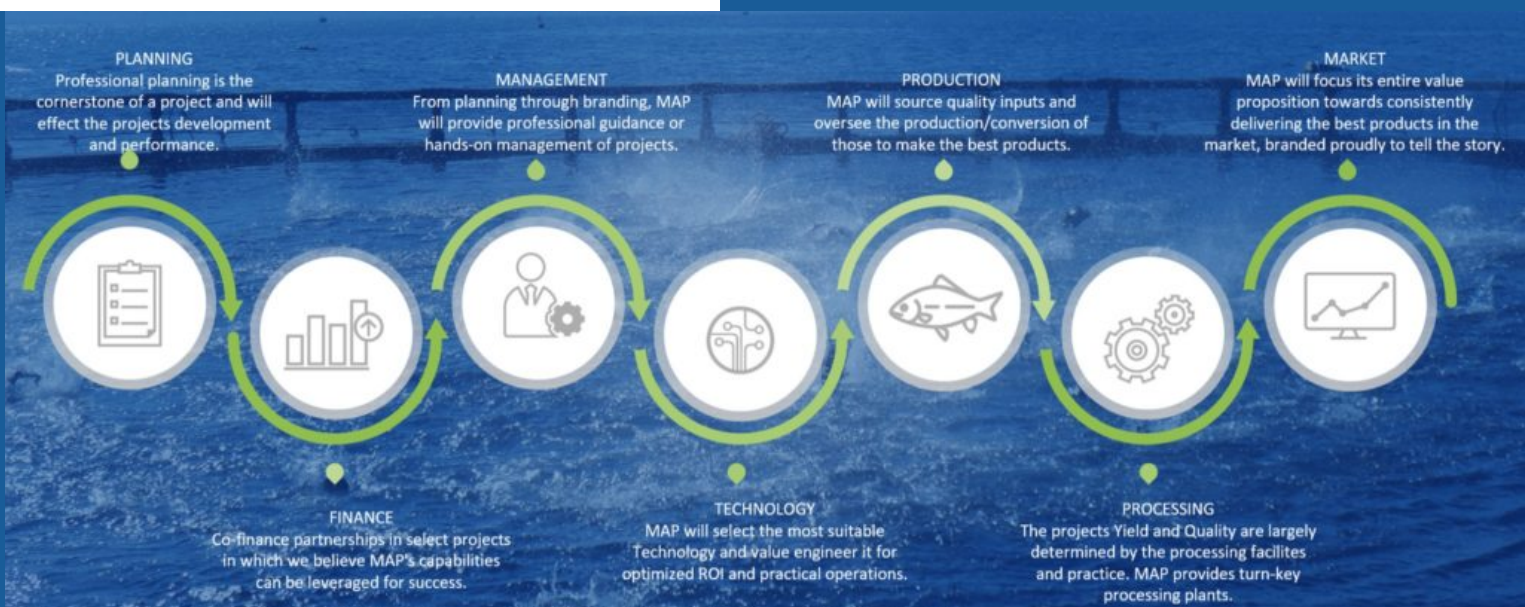
II: Enhance natural ecosystems with fish!

III: Vertical Integration Projects (VIP's) to close all loops and recycle all INPUTS!

IV: Navigate investors and operations and integrate the wisest solutions holistically. "Planning through Branding!"

V: Partner with endeavors based on success and not selling a certain product!

VI: MAP the value stream and maintain the balance between Potential and Reality!



We are on your Team!



Yedod Snir
Founder, CEO &
Lead RAS Designer



Israel Snir
President & Founder



Mario Ramirez
CTO & Co-Founder



Larissa Dias
Marketing & Sales



Allan Reyes
Cages Specialist



Yaron Shaool
Administration



Denis Josué Mancía
Hatchery &
Production Expert



Novian Nur Andresena
Architectural Design



Luis Enrique Ornelas
Civil Engineering



Mario Gonzalez
Mechanical Engineering



The four **E**'s:

Our Experience proves that when organizations Ethically invest in their people and Environmental stewardship, they create cohesiveness and unity towards a common goal and gain long-term Economic success and sustainability.

THE ESSENCE OF AQUACULTURE

VISION

Aquaculture industry's success to grow healthy seafood to reduce our impact on the Land and Oceans is crucial for our future!

MISSION

MAP will support Aqua endeavors to achieve and exceed they're Productive, Economical, and Social goals, with minimal dependence on natural resources to promote the industry's Sustainable Growth.

MAP Processing Plants

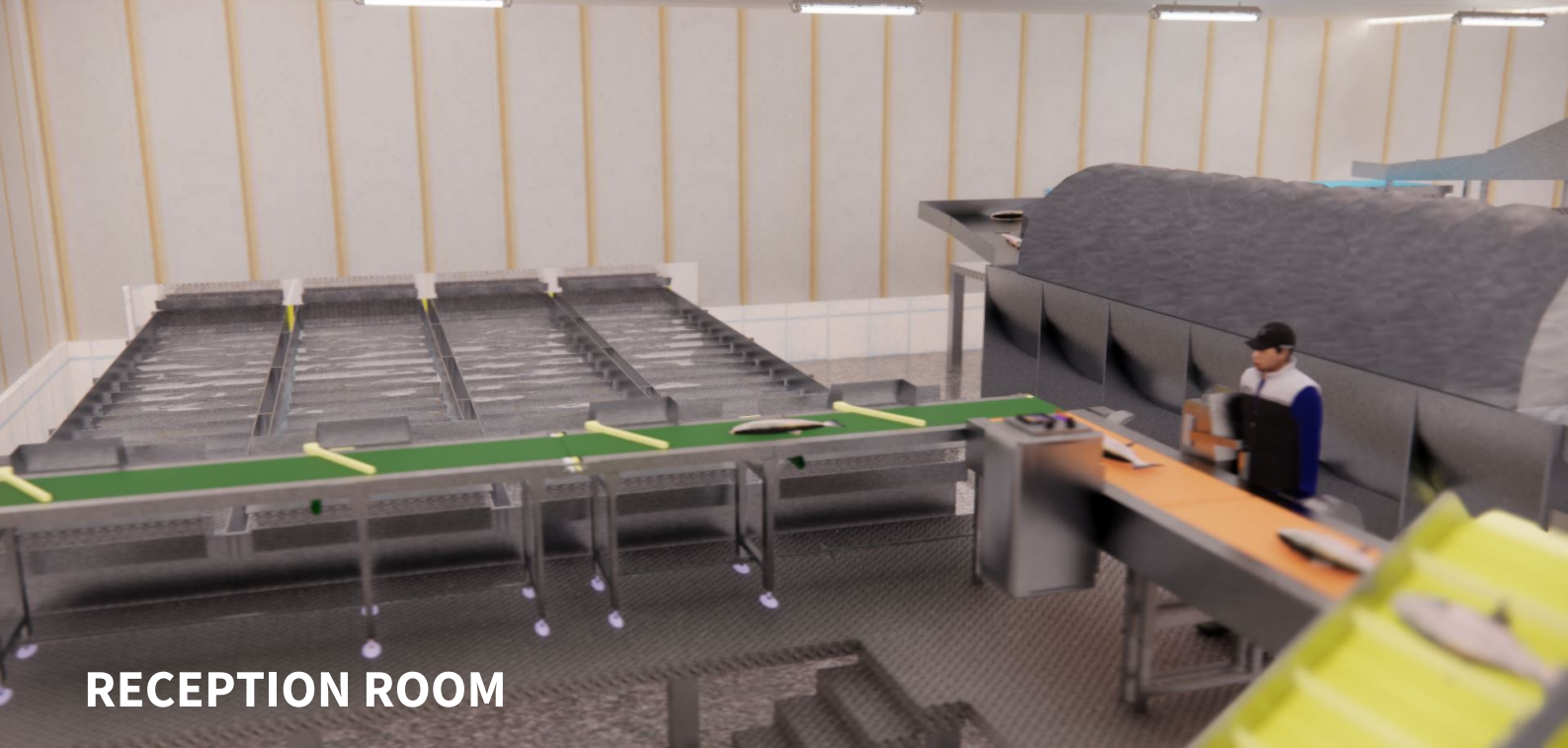
Well-designed and managed processing plants determine not only the product's Yield and Quality, but also your company's Competitiveness and Branding in the Marketplace!

Wholesome and efficient Value adding to byproducts is essential to profitability!

MAP's team has extensive experience with building processing plants for with more than 20 processing plants for various species.

The experience we bring coupled with innovative thinking allows us to provide your company with a modern plant complex, which is optimized and customized for the lowest CAPEX and OPEX.





RECEPTION ROOM



PROCESSING ROOM

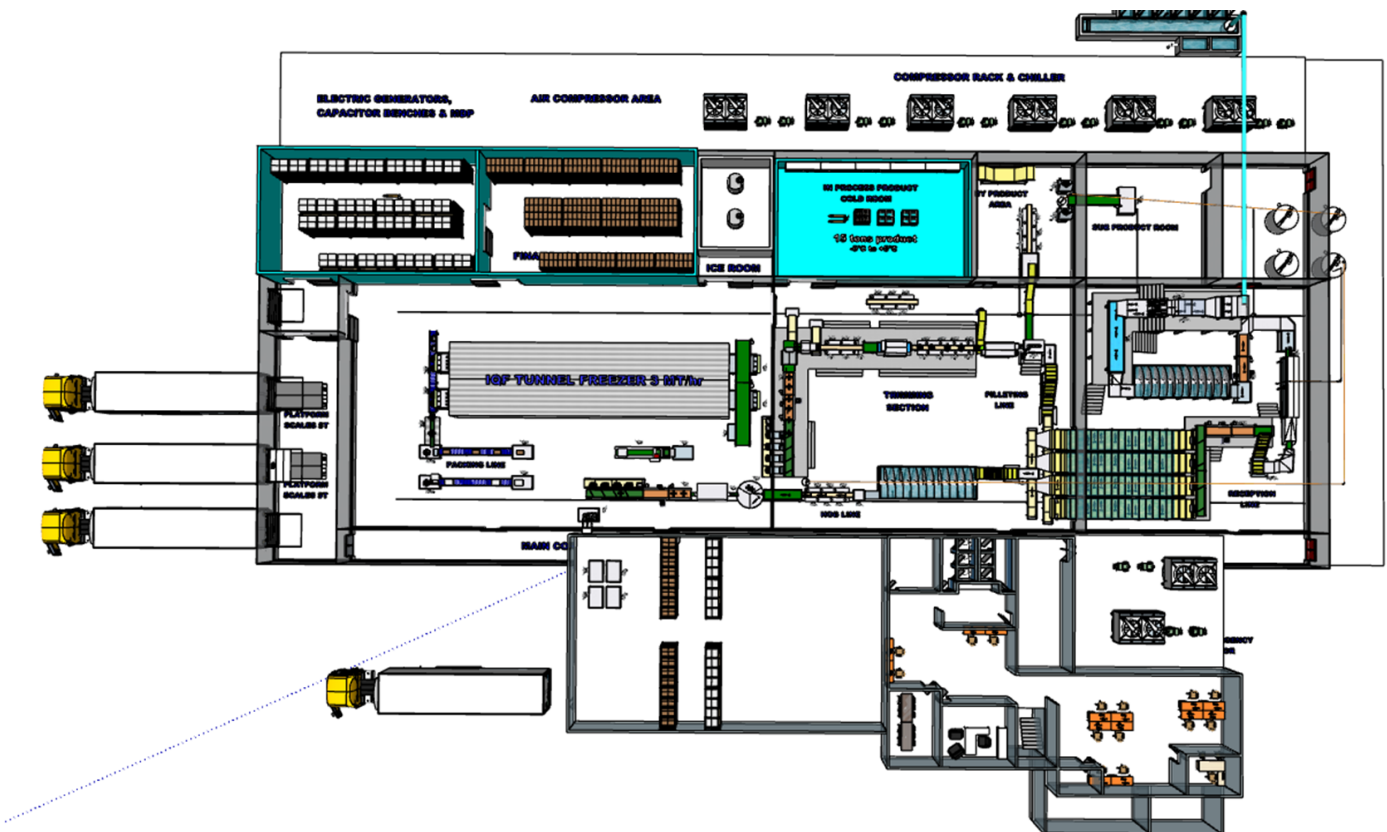


PACKING ROOM

Brand-new facilities

MAP fully designs and integrates every aspect of your processing plant.

- Raw Material receiving
- Processing
- Packing
- Cold Room
- By Product
- Social Area
- Support Services
- Mechanical
- Waste Water Treatment
- Final products mix
- Cold storage capacity
- Grading and packing systems
- Freezing and chilling systems
- Value added systems
- Trimming lines
- Filleting and portioning lines
- Stunning and bleeding
- Quality control stations



MAP integrations

MAP directs the **Alliance for Optimized Products (AOP)**, which combines a group of trusted partner entities coming together to provide the industry with comprehensive processing solutions and turn-key processing plants.



Our plants are located adjacent to the Growout facility to allow an efficient conversion from live fish to Raw materials, and production of Pre-Rigor products to maximize freshness.

Reengineering of existing processing plants

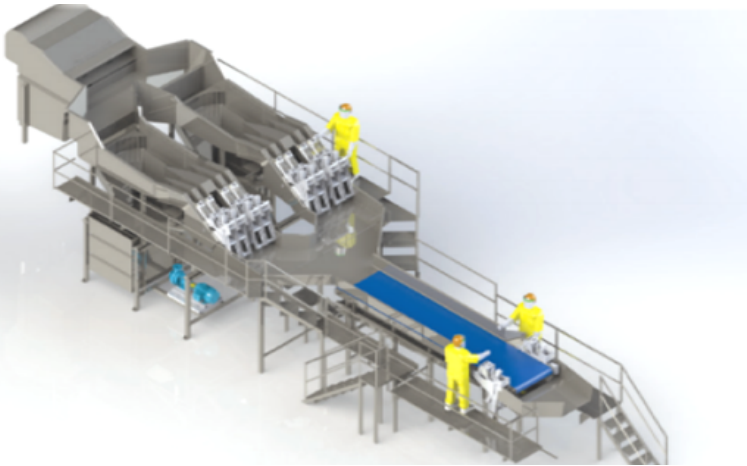
Through a detailed Process and Value Engineering using Best practices in line with the strictest product quality standards, MAP will help your company optimize to achieve the best returns from your raw material.

A lean manufacturing process evolved from spaghetti flow.

- ✓ Outstanding performance.
- ✓ Less machinery and process breakdowns.
- ✓ Reduced inventory levels..
- ✓ Increased stock turnover.
- ✓ Less space required.
- ✓ Labor efficiency & reduction.
- ✓ Improved delivery performance.
- ✓ Exponential growth.
- ✓ Higher profit.



STATE OF THE ART TECHNOLOGIES



Percussion Stunning

- Humane slaughter
- Reduced gapping
- Reduced drip loss
- Increased yields
- Increased shelf life
- Combined bleeding

Electrocution

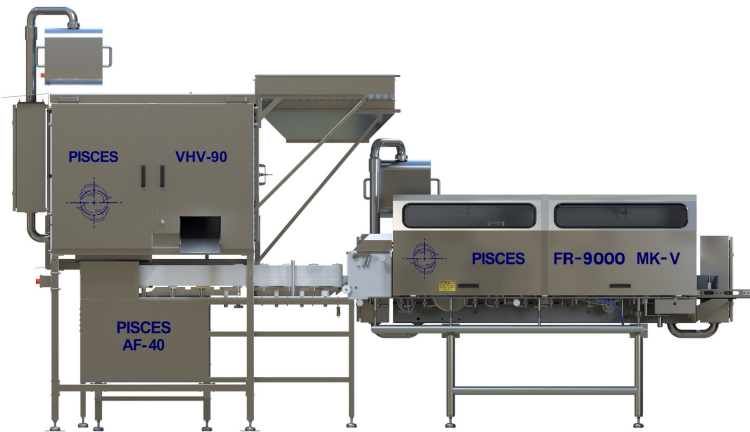
- Humane slaughter
- Reduced gapping
- Reduced drip loss
- Increased yields
- Increased shelf life



Water jet descaling

- Non Impact descaling
- Continues process
- High throughput
- Deep disinfection
- Water recirculated





Automated filleting

- Breakthrough Tech
- Single-operator
- Whole to fillet 30 FPM
- Improved quality
- Increased productivity
- Rapid ROI

Portioning system

- Customized products
- Increased market share
- Reduced offcuts
- Increased productivity
- Rapid ROI



Heading system

- "V" cut
- NO yield loss %
- 30-50 fish per minute
- Auto fish Adjustment
- Easy maintenance
- Increased productivity
- Rapid ROI

MAP PROCESSING PLANTS FEATURES



We design our plants to minimize footprint while factoring in modularity.

Plant for all commercial Species and customizable lines for any products.



We design our plants for flexibility and redundancy built-in the process, allowing the plant manager to quickly adapt to fluctuations in the incoming raw material flow or final product mix requirements.

Our facilities combine industry tested and state of the art machinery and components integrated direct from the manufactures and not distributors.



Our process is designed to meet and exceed the most requiring industry regulations and standards.

We design our facilities and processing schematics with Environmental responsibility in mind, from the raw material through the final products, including all side processes.



Built in Redundancy at every stage of the process.

We design our facilities to reduce operational costs making the product more competitive in the marketplace.





YOUR FINAL PRODUCTS

- **Firm Texture**
- **Sweet odor**
- **No off flavors**
- **No Gapping**
- **No residues**
- **Long shelf life**
- **Appealing**



Expected Timeline

From Planning to Production, you will have your complete and customized system in only 1.5 years.



Navigate with us on your Aqua Journey towards Success!



Why partner with us?

- MAP is founded and owned by veteran large scale Aqua operators.
- Our mission is to help more Aqua projects succeed and to tailor our solutions to their REAL needs.
- We are not married to any specific technology and always will pursue the best interest of our partners.
- We work with a broad network of industry experts who we know and trust to support your project.
- At MAP we work diligently and tirelessly until the set goals for the project are met or exceeded.
- MAP can stay engaged in Production well beyond the design, integration and commissioning.

THANK YOU!

Navigate with MAP on your Aqua Journey!



www.mapaqua.com

info@mapaqua.com

+1 (413) 768-9300

